



Direct Channel Worldwide Corp.

8F., No. 14, San Ming Rd., Shindian City, Taipei County 231,  
Taiwan (R.O.C)  
T: 886 2 8911 3828 F: 886 2 8911 3829

# HER101 THRU HER108

## Features

- High Surge Current Capability
- High Reliability
- Low Forward Voltage Drop
- High Current Capability

## Maximum Ratings

Operating Temperature: -55°C to +125°C

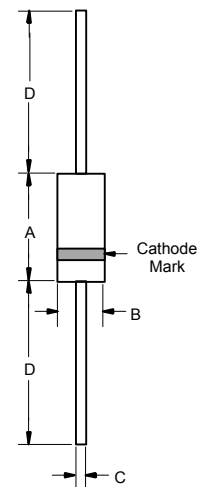
Storage Temperature: -55°C to +150°C

For capacitive load, derate current by 20%

Item Number	Device Marking	Maximum Recurrent Peak Reverse Voltage	Maximum RMS Voltage	Maximum DC Blocking Voltage
HER101	---	50V	35V	50V
HER102	---	100V	70V	100V
HER103	---	200V	140V	200V
HER104	---	300V	210V	300V
HER105	---	400V	280V	400V
HER106	---	600V	420V	600V
HER107	---	800V	560V	800V
HER108	---	1000V	700V	1000V

**1.0 Amp High  
Efficient Rectifiers  
50 to 1000 Volts**

## DO-41



## Electrical Characteristics @ 25°C Unless Otherwise Specified.

Average Forward Current	$I_{F(AV)}$	1.0 A	$T_A = 55^\circ\text{C}$
Peak Forward Surge Current	$I_{FSM}$	30A	8.3ms, half sine
Maximum Instantaneous Forward Voltage HER101-104 HER105 HER106-108	$V_F$	1.0V 1.3V 1.7V	$I_{FM} = 1.0A$ ; $T_A = 25^\circ\text{C}$
Reverse Current At Rated DC Blocking Voltage (Maximum DC)	$I_R$	5.0 A 100 A	$T_A = 25^\circ\text{C}$ $T_A = 100^\circ\text{C}$
Maximum Reverse Recovery Time HER101-105 HER106-108	$T_{rr}$	50ns 75ns	$I_F=0.5A, I_R=1.0A,$ $I_{rr}=0.25A$
Typical Junction Capacitance HER101-105 HER106-108	$C_J$	20pF 15pF	Measured at 1.0MHz, $V_R=4.0V$

Notes: 1. 300 us Pulse Width, 1% Duty Cycle.

DIM	DIMENSIONS				NOTE
	INCHES		MM		
	MIN	MAX	MIN	MAX	
A	.166	.205	4.2	5.2	
B	.08	.107	2.0	2.7	
C	.028	.034	.71	.86	
D	1.000	---	25.40	---	

Direct Channel Worldwide Corp.

www.directchannel.com.tw

Tel:886(0)2-89113828 Fax:886(0)2-89113829 Email: sales@directchannel.com.tw

## HER101 THRU HER108

### RATINGS AND CHARACTERISTIC CURVES

FIG.1- REVERSE RECOVERY TIME CHARACTERISTIC AND TEST CIRCUIT DIAGRAM

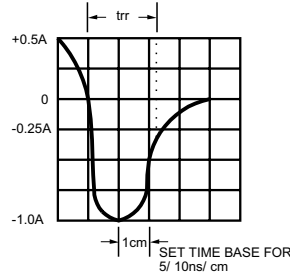
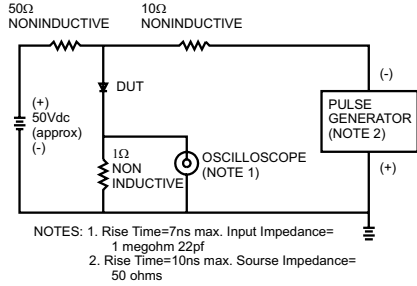


FIG.2- MAXIMUM AVERAGE FORWARD CURRENT DERATING

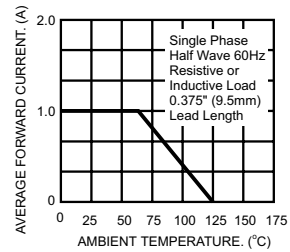


FIG.3- TYPICAL REVERSE CHARACTERISTICS

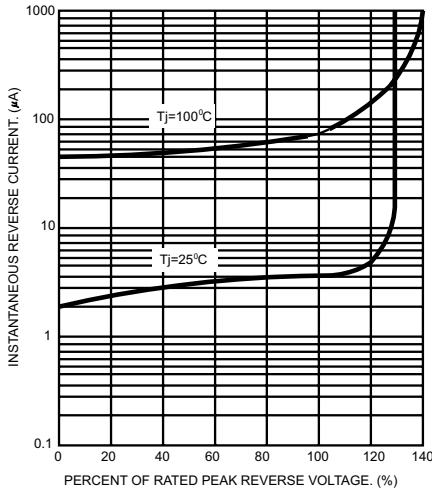


FIG.4- TYPICAL FORWARD CHARACTERISTICS

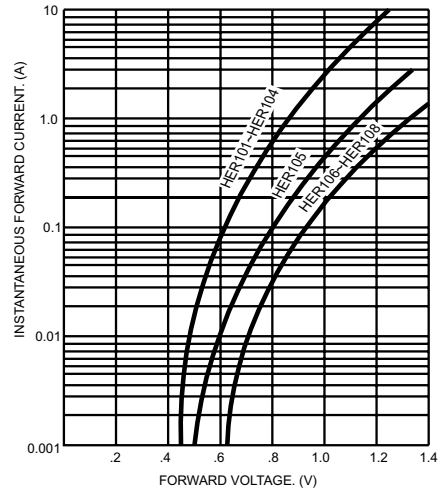


FIG.5- MAXIMUM NON-REPETITIVE FORWARD SURGE CURRENT

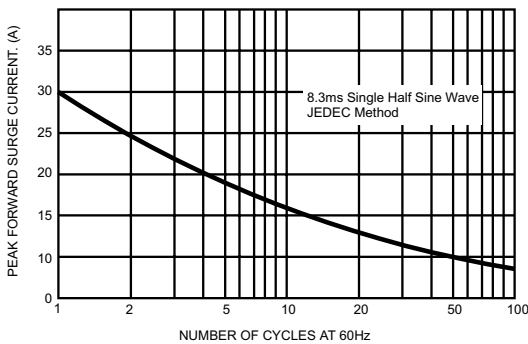


FIG.6- TYPICAL JUNCTION CAPACITANCE

